

RD

Contents.

1. About Us
2. Our Services
3. Our Values
4. Meet the Team
5. Experience
6. Studio Portfolio
7. What They Say About Us.

We acknowledge the Traditional Custodians of the land on which our studio stands, the Gadjigal people of the Eora Nation. We pay our respects to their Elders, past, present, and emerging, and extend this respect to all Aboriginal and Torres Strait Islander peoples.

We are committed to respecting and embracing the connection to country in all that we create. We recognize the deep relationship that First Nations peoples have with this land and aim to honor this in our work. We believe in designing with care and respect, ensuring our projects reflect the spirit and history of the land, while contributing to a sustainable and inclusive future.

About Us.



Our studio is more than just a team of professionals – we're a family united by a passion for architectural excellence and a commitment to environmental sustainability.

Located in Manly – on Sydney's Northern Beaches, our open-minded approach allows us to collaborate seamlessly, ensuring that each project benefits from a diverse range of perspectives.

We partner with clients who strive for the best and who share our values and aspirations. We believe in creating spaces that not only fulfill aesthetic and functional requirements but also contribute to a greener, more sustainable future.

Our studio focusses on the growth of our people to ensure we keep up with market trends, legislative changes, codes, controls and all the 'other stuff' that underpins our creative solutions.

We pride ourselves on the strong and lasting relationships we have forged since Platform Architects was founded in 2013, and we appreciate that our success is a reflection of our clients success.

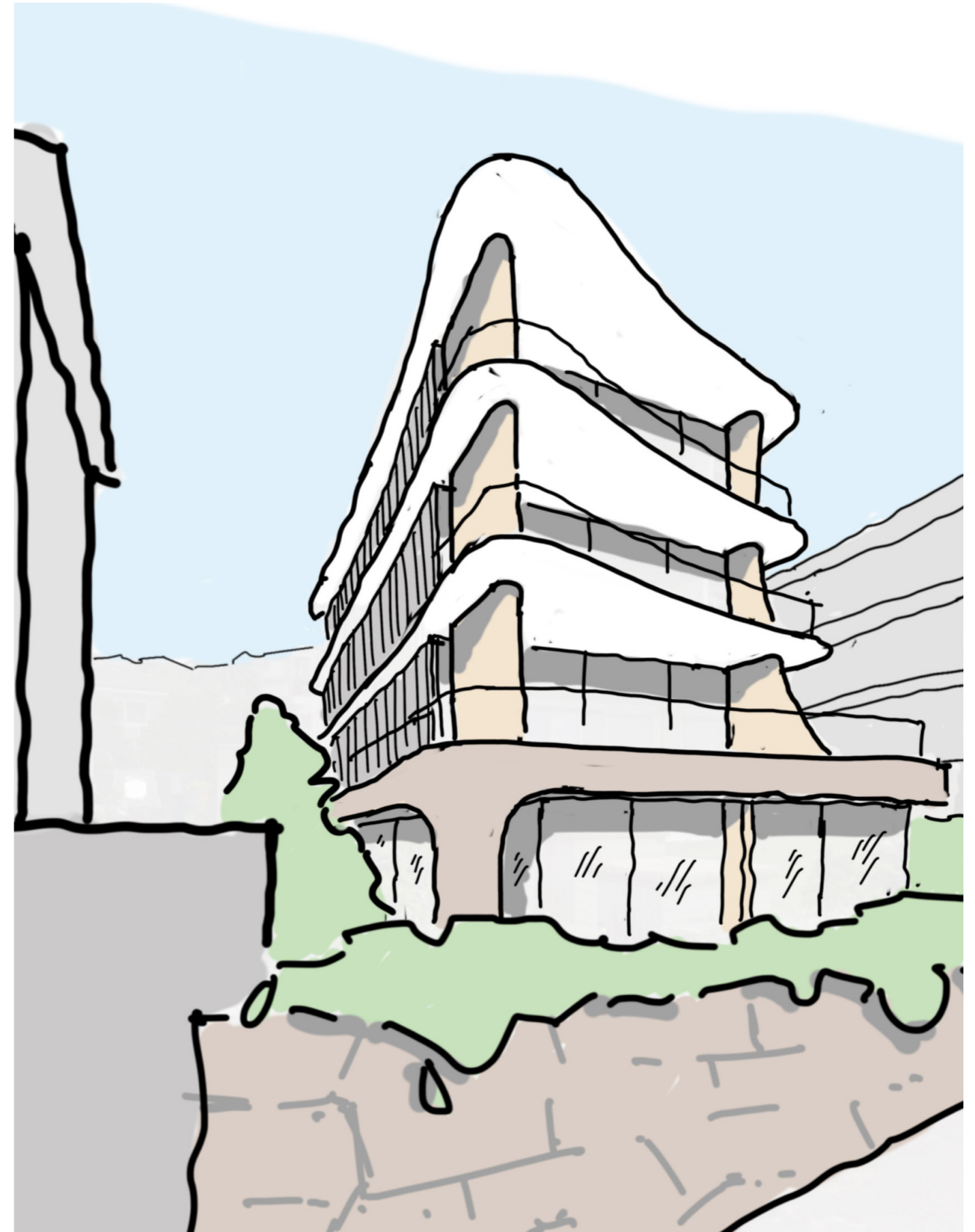
Our Services.

Platform Architects are passionate about all things property. Our preference is to be involved from before acquisition right through until final OC is issued. However, we also provide services on an as needed basis:

- ~ Feasibility Studies + Site Analysis
- ~ Concept Design including sketch up visualisations, area schedules and contextual analysis
- ~ Development Applications
- ~ Preliminary View Analysis
- ~ Class 1 Appeal involvement
- ~ Interior Design
- ~ Marketing Collateral - Plans, CGI's and Sample boards
- ~ Registered Design Practitioner - Class 2
- ~ Tendering documentation and involvement
- ~ Construction Certificate Documentation/IFC including Lead Design Consultant services.
- ~ Construction Stage Services
- ~ Sketchup visualisations

Over the last decade:

- ~ We have successfully gained Development Approval across approx 45 development applications.
- ~ We have delivered approx 17 of these through construction.
- ~ We have achieved a 100% approval rate on all of our Class 1 appeals with above average successes in regards to yields.



Our Values.

Led by director; Bridie Gough, our team works collaboratively across our projects, relying on our individual strengths and curiosities to produce exceptional outcomes.

As humans, we are dedicated and brave, considerate and empathetic. We hold true to our values of Growth, Family and Sustainability and these values make their way into our work, influencing our design process, client relationships, and are reflected in the buildings and spaces we create.

We embrace the spirit of **FAMILY** at PA. Fostering a culture of mutual support, respect, and care. Our commitment extends beyond the workplace, creating a close-knit family that values each member's well-being and growth. This collaborative environment enhances both professional and personal development, driving our collective success and positively impacting our architectural endeavours. This value strengthens our team internally and creates a sense of comfort and belonging for our clients, who we believe, become an extension of the PA family.

We nurture a culture of **CONTINUOUS LEARNING** and **CURIOSITY**, recognising the essential nature of personal and professional development. Encouraging each team member to actively participate in their growth plan on a monthly basis contributes to the collective advancement of our practice. By committing to a culture of curiosity, we ensure that our work meets current standards and pioneers the future of architecture.

SUSTAINABILITY drives every aspect of our studio – the processes we follow, the people we connect with and the projects we create. Our belief in contributing positively to the environment guides us to create spaces that hold lasting value and successful outcomes which not only leave a positive legacy within the built environment but also strengthen our relationships with all involved.



Meet The Team.



BRIDIE GOUGH

Director - Architecture and Interiors
Registered Architect 8280

Bachelor of Architecture (Hons)
NSW Nominated Architect 8280
Design and Building Practitioner Reg. DEP0001408

Bridie brings over 20 years of experience in architecture and property development. She has designed and delivered a wide range of projects over her career, from large scale hospitality and residential developments to smaller scale restaurants and retail fitouts. These days, Platform Architects has a particular focus on all things residential.

"I absolutely love looking at a new site and working out how to create something that not only looks beautiful, but that is feasible, sustainable and will withstand the test of time."

Bridie leads her team with an open heart ensuring a high level of trust is built with clients, consultants and staff.

Meet The Team.

Frida Blomqvist

Senior Associate
Registered Architect 10666
Bachelor of Architecture (Hons)
Design and Building Practitioner

Frida is an incredibly skilled Architect who has the ability to maximise a sites potential whilst delivering a beautifully considered design outcome. Her Swedish background leads to efficient layouts which respond to the Aussie context, environment and style.

She is a wealth of knowledge when it comes to design and building controls and as a result she leads up our in-house QA process along side Bridie.

Eli De Cecchi

Interior Designer
Bachelor of Architecture

Eli leads up the Interiors arm of the business. Staying curious about the latest and greatest styles, products and ideas, she manages to align the inside with the out, ensuring a cohesive design at completion. Having experience in both Australia and Italy, Eli brings a global perspective to our work which then successfully connects with our clients at a human scale.

Max De Faveri

Construction Management
Bachelor of Architecture

Max comes from a combined background of Architecture and Design Management on the building side of things. As a result he ensures what we design in buildable, compliant and maintains design intent. His understanding of a construction site means he is able to effectively communicate around all things construction, with all relevant personnel - be it the head contractor right through to the other consultants.



Meet The Team.

Matt Gold

Project Architect
Registered Architect
Bachelor of Architecture (Hons)

Matt comes to Platform form a breadth of experience from large metro scale urban projects through to high end multi-residential. He has strong experince leading teams during construction stages of a projects and also loves to get involved in front end design work.

Jules Stockwell

Revit Technician
Bachelor of Interior Architecture

Whilst her degree maybe Interiors focussed, Jules is a powerhouse when it comes to delivering. Her revit knowledge and skill ensure our documentation is not only efficient but also thorough and accurate. She has a significant experience across residential and commercial projects, working at some of Sydneys top tier firms to hone her skills.

Favourite past time - Skiing.

Delfina Nager

Senior Designer
Bachelor of Architecture

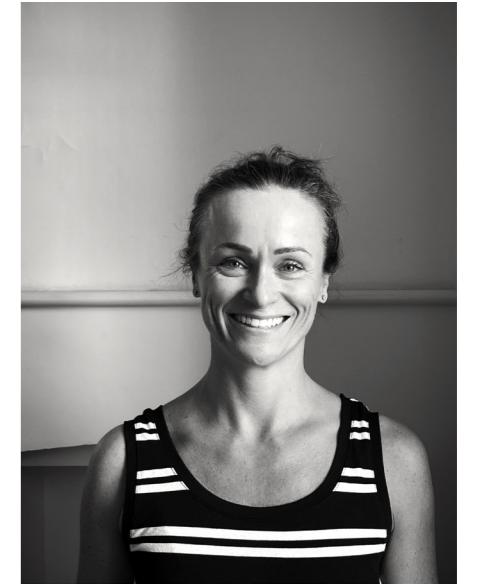
Delfina was pivotal in our transition to Revit. She carries numerous years of experience in class 2 residential projects both in Australia and abroad. She champions our sustainability initiatives within the studio and has exceptional attention to detail.

Favourtie past time - Making music.

Deivide Correa

Studio Manager
Bachelor of Communications

Also known as DVD - he manages the Studio day to day. He is responsible for our social media, facilities management, social events, and HR.



Relevant Experience and Policies

Project Experience Overview

- ~Ed Square, Edmonson Park - Terraces Houses - Class 1
- ~The Showgrounds, Castlehill - Master Plan
- ~The Jetty, Bayview - Seniors Living - Class 3
- ~NSW Missing Middle Comp - Winner - Terraces
- ~Finn, Manly Beach - Class 2
- ~Ill Oyama, Manly - Class 2
- ~Island Site, Dee Why - Class 2
- ~FCF, Fairlight Beach - Class 2
- ~Belose Boarding House - Class 3
- ~The Cecil - Class 1
- ~Split Duplex - Class 1
- ~Sugarloaf House - Class 1
- ~House on the Flats, Manly Beach - Class 1
- ~Rockpool Residences, Fairlight - Class 2
- ~The Henry, Manly - Class 2
- ~The Victoria, Manly Beach - Class 2
- ~Sandune House, Boomerang Beach - Class 1
- ~Fairlight St Apartments, Fairlight - Class 2
- ~NSM Apartments, Manly Beach - Class 2
- ~Cured Manly - Hospitality

Previous Project Experience

- ~Vibe+Medina Hotels, Darwin Waterfront - Class 3
- ~Tide, Church Point - Seniors Living - Class 3
- ~Barkala, St Ives - Seniors Living

Awards + Competitions

- ~ 2017 NSW State Government Missing Middle Design Competition. Winner - Terraces
- ~ Edmondson Park Stage 4 Design Competition - Frasers Property.

Studio Policies

1. Sustainability Action Plan

We balance every decision against its environmental, social and financial impacts.

2. Safety In Design

Platform Architects implements the Codes of Practice as outline by the NSW Work Health and Safety.

3. Quality Assurance

As far as is reasonably practicable, safe and without risks to health and the environment and to complying with its duty under Section 28 of the Occupational Health and Safety Act 2004, Platform Architects implement a range of QA processes throughout the lifecycle of a project.

4. Growth Program

We apply the 70:20:10 training rule to all of our staff, as we hold professional growth as a priority value within the studio.

5. Insurances

Platform Architects is fully insured and carries \$10m of Professional Indemnity insurance and \$20m of Public Liability insurance which is underwritten by Zurich.

Feature Projects - Class 2



III OYAMA
Manly Beach, NSW
3 Apartments - Completed 2006



The Henry
Manly Beach, NSW
3 Apartments - under construction



Finn
Manly Beach, NSW
4 Apartments - Under Construction



The Victoria
Manly Beach, NSW
15 Apartments - S34 Approved

Feature Projects - Class 2



Gateway Apartments
Lane Cove, NSW
120 Apartments. Concept



AGD Apartments
Fairlight, NSW
15 Apartments - DA



Newstead Flats
Manly Beach, NSW
10 Apartments
Completed 2023



Cove Apts
Fairlight Beach, NSW
4 Apartments - DA

Feature Projects - Class 1



House on the Flats
Manly, NSW
House - Completion Apr '25



Oceanview
Freshwater NSW
House - DA Approved



The Cecil
Fairlight, NSW
2 x Dwellings
Completed 2024



Spit Duplex
Seaforth, NSW
2 x dwellings
Under Construction

Feature Projects - Class 1



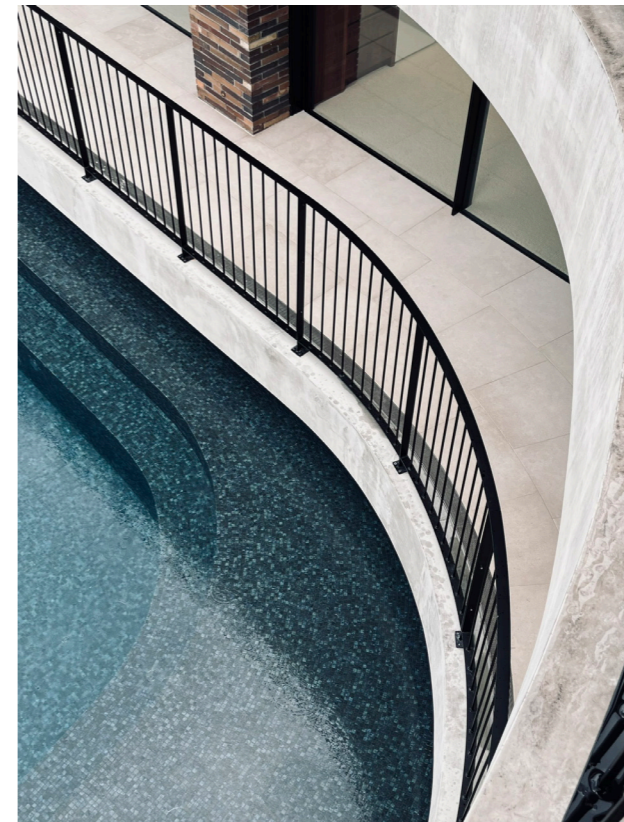
Lauderdale 1
Fairlight, NSW
2 x Dwellings
Completed 2023



Griffith Semi
Fairlight, NSW
2 x Dwellings
Under Construction



Sandune House
Boomerang Beach, NSW
Beach House
Under Construction



Sugarloaf House
Castlecrag, NSW
Bush House
Completed 2024



ED
Edmonson Park, NSW
300 x Terrace Houses
Under Construction

Feature Projects - Interiors



'41'
Fairlight, NSW
3 Dwellings
Completed 2023



Finn
Manly Beachfront, NSW
4 Apartments
Under Construction



Spit Duplex
Seaforth, NSW
2 x dwellings
Under Construction



The Henry
Manly, NSW
3 x Apartments
Under Construction



Porteno
Manly, NSW
21 x Apartments
Completed 2023

WHAT THEY SAY ABOUT US

“Bridie and her Platform team are a group of honest, transparent and experienced architects who have been an absolute joy to work with. The culture and knowledge that flows from the office has resulted in successful outcomes from every angle. I look forward to many more collaborative projects in the future. Legends.”

John Allen
Tomorrow Finance – Director.

~

“Successful development outcomes require highly efficient spaces that meet the target market, and buildings that are constructable and cost efficient, whilst maintaining quality.

Platform Architects are a core member of DA Properties development consultant team as they lead design interpretation of the target market needs and work collaboratively with our other core consultants and contractors to optimise our development outcomes.”

David Allen
DA Properties - Director

~

“I have worked with many Architecture firms and can say that my experience with Platform Architects has been awesome. Bridie and her team are commercially minded whilst still consistently delivering high quality designs. They are a pleasure to deal with and I would certainly work with them again on future projects.”

Nicholas Heaton
CBRE

~





by PLATFORM ARCHITECTS

'2/40 East Esplanade, Manly. NSW 2095 -
Phone: 02 8385 9759
Bridie Gough Nominated Architect 8280
www.platformarchitects.com.au